


EBIPAX
INCORPORATED
MISSION CRITICAL SOLUTIONS

A photograph showing a person in tactical gear, including a vest and pants with multiple pockets, standing on a raised platform. The platform is part of a vehicle-mounted system, likely a truck or van, and features a large array of speakers. The scene is set outdoors, possibly in an urban environment, with a building visible in the background. The image is partially obscured by a large red diagonal graphic element.

CLEAR VOICE MN™ - MN SERIES
PLANAR MAGNETIC MASS
NOTIFICATION SYSTEM
FIXED & MOBILE

EBIPAX™ INC. 2019

EBIPAX, EBIPAX INC., EBIPAX INCORPORATED and the Stylized EBIPAX Logo are trademarks or being registered trademarks of EBIPAX Inc. and are used under license. All other trademarks are the property of their respective owners. EBIPAX™ INC. 2019. All rights reserved.

CLEAR VOICE MN™

THE NEXT GENERATION OF MASS NOTIFICATION SYSTEM (MNS)

INTRODUCING **MN SERIES** LONG DISTANCE CLARITY AND INTELLIGIBLE MNS SCALABLE AND MODULAR SOLUTION

DESIGNED SPECIFICALLY TO MEET THE HARSHTEST ACOUSTICAL AND ENVIRONMENTAL DEMANDS OF MASS NOTIFICATION SYSTEMS (MNS), THE CLEAR VOICE MN™ IS THE FIRST CHOICE OF FIRST RESPONDERS AND EMERGENCY SERVICES AGENCIES WHEN LONG DISTANCE CLARITY AND INTELLIGIBILITY ARE THE PRIORITIES. CLEAR VOICE MN™ MIL-STD-810F SCALABLE AND MODULAR MISSION CRITICAL MNS INCORPORATES CUTTING-EDGE MAGNETIC PLANAR TRANSDUCER TECHNOLOGY DELIVERING UNMATCHED PERFORMANCE, POWER AND CLARITY TO ASSIST CIVIL PROTECTION, FIRST RESPONDERS AND LAW ENFORCEMENT AGENCIES IN HARSHTEST ENVIRONMENTAL CONDITIONS.



CUTTING-EDGE TECHNOLOGY

Surface loudspeaker array using a plurality of full-range flat panel or planar magnetic transducers, which are mounted closely together on either a flat or a curved surface to produce the controlled sound dispersion in both the horizontal and vertical planes.

Dispersion angles can range from nearly parallel-3 degree beams of sound (in both horizontal and vertical planes) to 360 degree coverage. Additionally desired Sound Pressure Levels (SPL) at specific distances can be created by simply adding more drivers to the array. The unique aspect of the technology is that all of the various models are created using just one basic transducer model which can deliver maximum clarity and intelligibility up to 10 decibels below the ambient noise level comparing to conventional horns and traditional speakers to distances beyond 1,600 meters.

MN SERIES BUILDING BLOCK

The CLEAR VOICE 1MN transducer is the building block for 2MN and 4MN models, capable of delivering an intelligible message over 500 meters and is the perfect solution for loud production areas or outdoor environments where conventional speakers and horns cannot overcome the ambient noise level. With the proprietary CLEAR VOICE technology, the MN transducer series can deliver an intelligible message even when broadcasting at 10 decibels below the ambient noise level!

MN series can operate as a stand-alone solution and has the diversity to be designed into a large installation. With a frequency range down to 180hz is extremely efficient for public address applications. MN is self-powered and is accompanied by a variety of mounting options allowing for easy deployment in any situation. Powerful and adaptable, MN series can deliver a concentrated signal to a defined location or configured in an array covering a wide area and long distances. The magnetic vehicle mount or tripod stand, combined with the self contained controller case, creates a mobile solution providing first responders and tactical team with the ability to deliver messages where it is needed most. When designed with the different mounting solutions, MN is the perfect solution for industrial plants, production facilities, transportation yards, oil fields, ports of call, stadiums, college campuses, and public gathering space where clear and intelligible communication is essential.

BUILT TO LAST

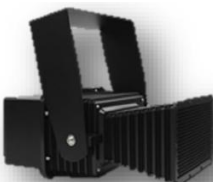
The MN SERIES housing is made of a unique polycarbonate material designed to withstand every environment including extreme heat and cold and is impervious to UV light and chemical exposure. Designed with watertight seals connectors, the MN SERIES can be deployed anywhere meeting IP-66 standard environmental specifications.

1MN MODELS

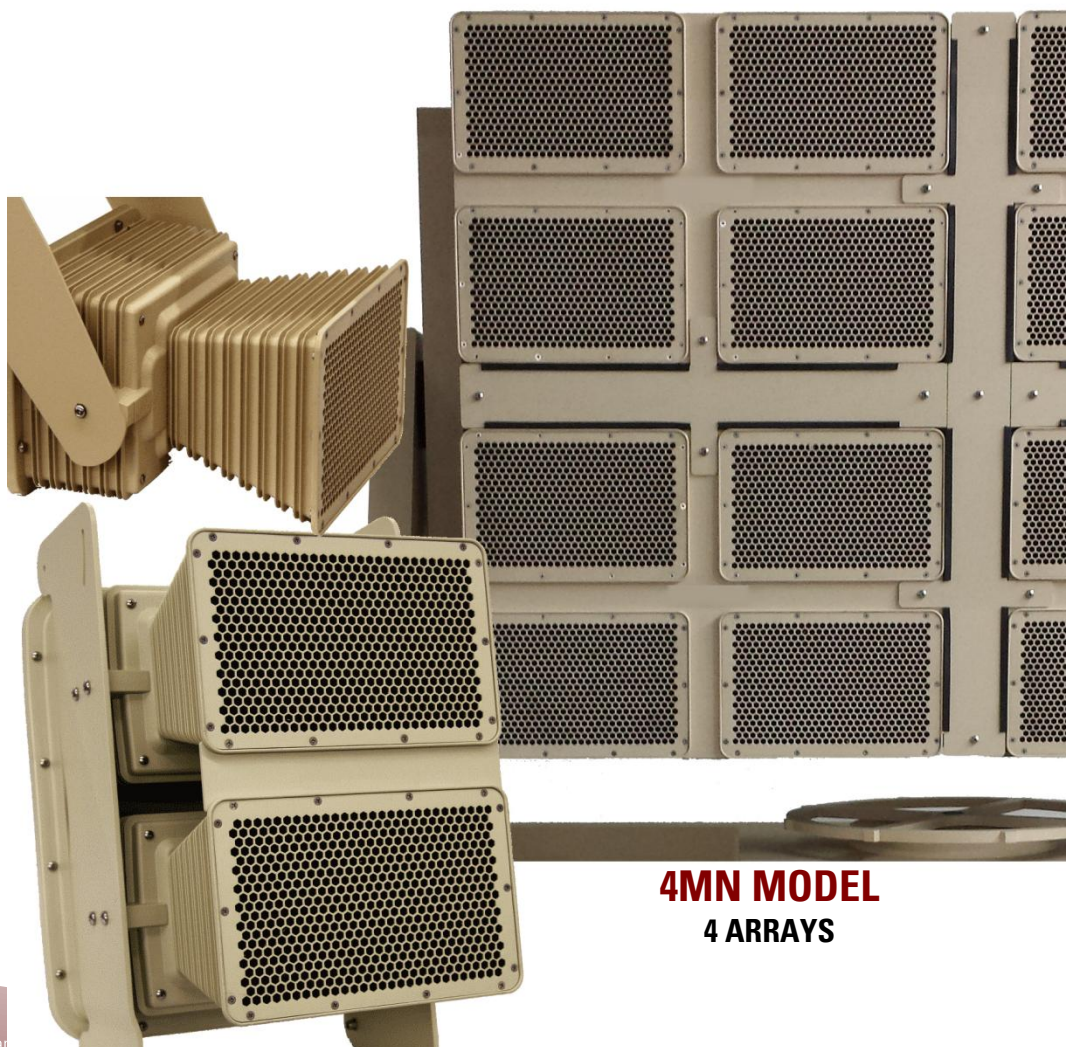
1MN



1MN-P



1MN-DIPOLE



4MN MODEL 4 ARRAYS

2MN MODEL

MN SERIES TECHNICAL SPECIFICATION

MODEL OPTIONS	1MN 1MN --- 1MN-P --- 1MN-Dipole	2MN-P	4MN-P
Sensitivity	1w/1m = 96dB-SPL when coupled to the waveguide	1w/1m = 120dB-SPL when coupled to the waveguide	1w/1m = 128dB-SPL when coupled to the waveguide
Driver	One planar magnetic transducer mounted to a 500 Hz. Waveguide	Two planar magnetic transducers each mounted to a 500 Hz. Waveguide	Four planar magnetic transducers each mounted to a 500 Hz. Waveguide
Intelligible audio range	Over 200 meters	Over 300 meters	Over 500 meters
Power Handling	100 watts RMS or 1500 watts peak (per transducer) for less than 5 milliseconds		
Impedance	4 ohm		
Environmental Design	Meet IP-66 classification and MIL-STD-810F specifications. Operates from -40°C to 60°C		
Enclosure	Made of Xenoy, high impact resistant, heat resistant, chemical resistant, weather resistant. Available in Desert Sand or Black. Custom colors are available for an additional charge.		
Warranty	3 Years for speaker materials and workmanship		
Configurations	Compact, highly portable, full-range Planar Magnetic Speaker for indoor and outdoor use. Available in passive, self powered and battery operated versions. 1MN dipole version is available.		
Accessories	Tripod yoke adapter & tripod speaker stand; wireless microphone system; hardshell road case; custom mounts for specific applications, i.e., vehicles, watercraft, etc; 360 degree mounting system; portable power pack with controls	Tripod yoke and speaker stand; magnetic mount for vehicles and watercraft; wireless microphone system; hardshell road case; variety of mounting solutions for fixed installations and custom applications.	
Weight	2.8Kg --- 7.3Kg --- 3.7Kg	14.1Kg	26.4Kg
Dimensions	20.4W x 26.5H x 31.5D --- 20.4W x 26.5H x 46.8D 20.4W x 26.5H x 38.1D cm	28W x 58.5H x 41.7D cm	56W x 58.5H x 41.7D cm

APPLICATIONS

- Law Enforcement
- Military Applications
- Coast Guard Boats
- Maritime Vessels
- Tactical Vehicles
- Border PA Systems
- Early Warning Systems
- Public Address
- Aircraft Hangers
- Industrial Plants
- Sports Stadiums
- Transportation Yards
- Railway Stations
- Emergency Response
- Mass Notification



For more information on our mission critical intelligence solutions, please contact us at:
support@ebipax.com